



# Room Hire

# Auxilium House





## Welcome to Auxilium House

Located in the heart of Hereford, on the outskirts of the city centre, Auxilium House is based on Legion Way, just off Roman Road.

This bright and spacious building has recently undergone a huge renovation, providing modern and comfortable offices and meeting rooms for both our employees and external clients.

With flexible table layouts and modern equipment, each room can be set up to suit your bespoke requirements. Our rooms are available to hire at competitive half and full-day rates.

Kitchen facilities are available with free tea and coffee, and we can also offer additional support services including setting up laptops for IT training, printing and photocopying, event management, and facilitators if required.

We hope this brochure covers everything you need to know, but please get in touch with our friendly support team if you have any questions, or would like to view or book our facilities.

**Call 01432 383678 or email [enquiries@hoopleltd.co.uk](mailto:enquiries@hoopleltd.co.uk)**

There are many reasons to choose Auxilium House for your meeting, training or social event. Here are just a few of them...



Large screens in each room



Flexible room layouts



Two large car parks with FREE parking



Competitive rates



Brand new air conditioning system



FREE tea and coffee facilities



Convenient location



Disabled access and accessible facilities



Guest Wifi available

# Boardroom 1

Seats 10 people



Dependent on configuration, the room comfortably seats 10 people in boardroom layout, but many more if hosting seminars or talks where rows of chairs are required. This room is perfect for team meetings, training groups and planning sessions.

This room measures **8m x 6m**.

**£190 per full day** (9.00am–5pm)

**£95 per half day** (9.00am–1.00pm, or 1pm–5pm)

(For longer periods or other special requirements, please contact our team to discuss our rates. All prices are exclusive of VAT.)

- ✓ Flexible room layouts
- ✓ Premium chairs for extra comfort
- ✓ Large window and plenty of natural light
- ✓ Large screen with presenting and video conferencing facilities



# Boardroom 2

Seats 14 people



Dependent on configuration, the room can comfortably seat 14 people in boardroom layout, but many more if rows of chairs are used for a seminar style event. This room is perfect for team meetings, training groups and planning sessions.

This room measures **9m x 6m**.

**£200 per full day** (9.00am–5pm)

**£100 per half day** (9.00am–1.00pm, or 1pm–5pm)

(For longer periods or other special requirements, please contact our team to discuss our rates. All prices are exclusive of VAT.)

- ✓ Flexible room layouts
- ✓ Premium chairs for extra comfort
- ✓ Large window and plenty of natural light
- ✓ Large screen with presenting and video conferencing facilities



# Boardroom 1 & 2

Seats 30 people



Our boardrooms provide a truly flexible space and have the option of opening the partition to turn the two rooms into one large space. When the partition is open, the room measures **17m x 6m**.

**£300 per full day** (9.00am–5pm)

**£150 per half day** (9.00am–1.00pm, or 1pm–5pm)

(For longer periods or other special requirements, please contact our team to discuss our rates. All prices are exclusive of VAT.)



# Collaboration Suite

Seats 50 people



Our Collaboration Suite is the largest of our available rooms, located on the top floor of Auxilium House.

The space can be configured in many different ways, and can include boardroom style tables, rows of seats or banks of desks with IT equipment. This space is perfect for larger training sessions, conferences, networking events or team away days. We've even used it for yoga classes!

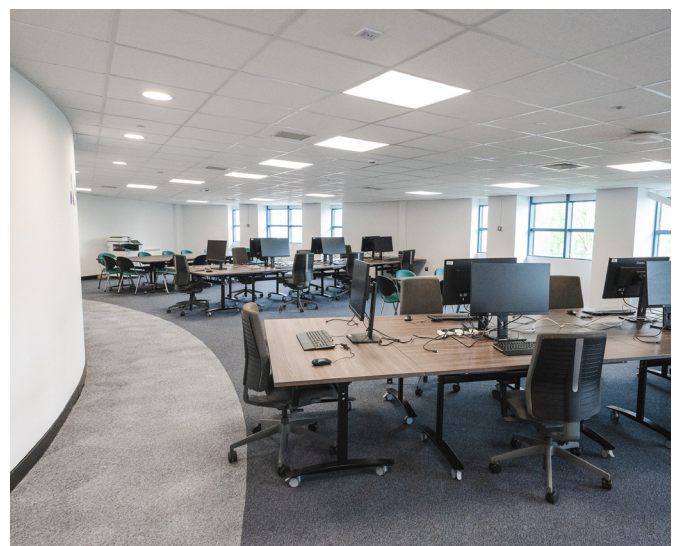
This room measures **15m x 7.5m**.

**£320 per full day** (9.00am–5pm)

**£160 per half day** (9.00am–1pm, or 1pm–5pm)

(For longer periods or other special requirements, please contact our team to discuss our rates. All prices are exclusive of VAT.)

- ✓ Flexible room layouts
- ✓ This room has its own kitchen and printing facilities
- ✓ Spacious room with plenty of natural light
- ✓ IT equipment can be removed or kept depending on your needs



# Training Room

Seats 30  
people



Our purpose-built training room is the perfect space to host your team training session.

Located on the ground floor of Auxilium House, this room can be configured in many ways, from groups as shown here, to boardroom style for a large meeting, horseshoe style for team workshops, or rows of chairs for a conference or seminar.

This room measures 12m x 5m.

**£200 per full day** (9.00am–5pm)

**£100 per half day** (9.00am–1pm, or 1pm–5pm)

(For longer periods or other special requirements, please contact our team to discuss our rates. All prices are exclusive of VAT.)

- ✓ Flexible room layouts
- ✓ Interactive touch screen with digital whiteboard, presenting facilities and more
- ✓ Use of display boards, white board, room divider and flip charts
- ✓ Bright and spacious





# Magnolia

Seats 8  
people



Our Magnolia meeting room is the smallest of our available rooms, comfortably seating up to 8 people.

Located on the first floor of Auxilium House, this room is ideal for smaller team meetings, interviews and planning sessions. This room measures 4m x 5m.

**£120 per full day** (9.00am–5pm)

**£60 per half day** (9.00am–1pm, or 1pm–5pm)

(For longer periods or other special requirements, please contact our team to discuss our rates. All prices are exclusive of VAT.)

- ✓ Dual aspect windows
- ✓ TV screen with presenting and video conferencing facilities
- ✓ Multiple data points, great for co-working sessions
- ✓ Toilets and kitchen facilities just next door



# Classrooms

Seats 24  
each  
room



When not being used for our Study Programme, our classrooms are available to hire outside of term times.

Located on the ground floor of Auxilium House, this space is self-sufficient and even has it's own entrance. Our three large classrooms can be hired together to create one huge private area, perfect for many purposes.

**£400 per full day** (9.00am–5pm)

**£200 per half day** (9.00am–1pm, or 1pm–5pm)

(For longer periods or other special requirements, please contact our team to discuss our rates. All prices are exclusive of VAT.)

- ✓ 3 x large classrooms
- ✓ Self-sufficient area
- ✓ Private breakout space
- ✓ Private kitchen and toilets
- ✓ Each room has interactive touch screens



# Take a look around...



# Get in touch

Our friendly business support team are on hand to answer any questions you may have, from parking and local amenities, to catering and technical equipment.

Call the team on 01432 383678 or email [enquiries@hoopleltd.co.uk](mailto:enquiries@hoopleltd.co.uk)

# Find us

Our facilities are located on the outskirts of Hereford City Centre, highlighted on the map below. Also highlighted is the train station, which is 1.4 miles away. Click [HERE](#) to search our location on Google Maps, or find out more below. If you have any questions, simply get in touch and we will be happy to help you plan your journey.

## Car Parking

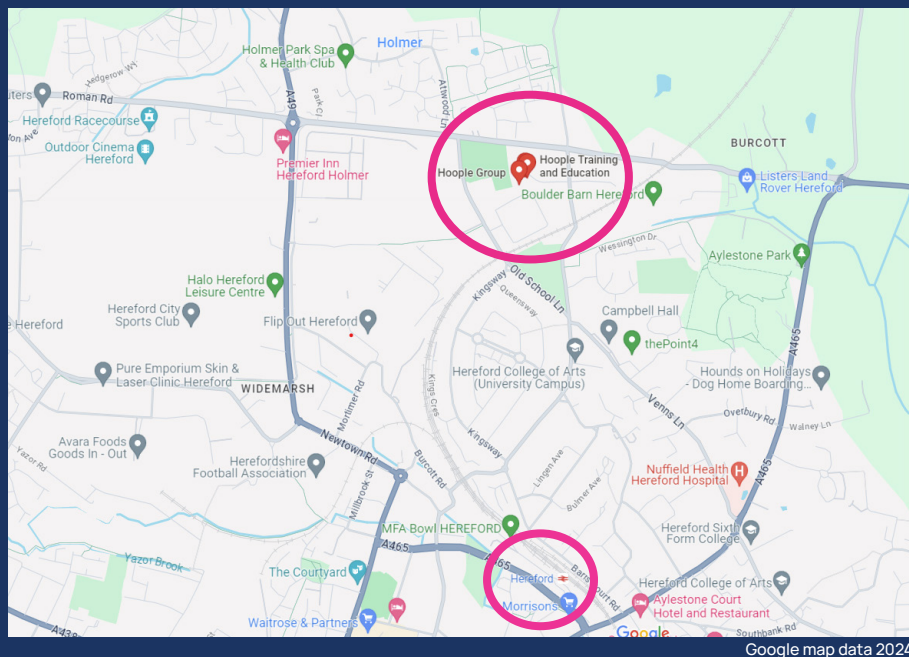
We have two large car parks on site which are free to use. There are a number of disabled bays as well as separate visitor parking. Please let us know at the time of booking if you require a reserved parking space and we can arrange that for you.

## Cycling

There is a cycle rack at the rear of the building.

## Public Transport

There are bus stops very close to Auxilium House. Bus timetable information is available on the [Herefordshire Council website](#).



Auxilium House, Legion Way, Hereford, HR1 1LN

01432 383678 // [enquiries@hoopleltd.co.uk](mailto:enquiries@hoopleltd.co.uk) // [www.hoopleltd.co.uk](http://www.hoopleltd.co.uk)

